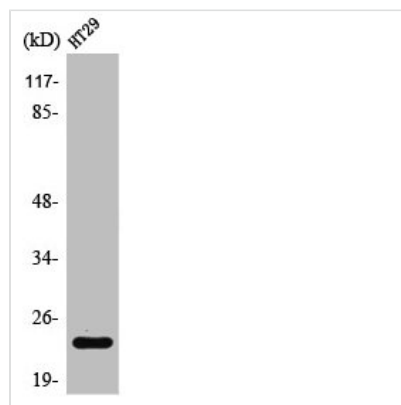




RAB29 Antibody

Product Code	CSB-PA003898
Storage	Upon receipt, store at -20°C or -80°C. Avoid repeated freeze.
Uniprot No.	O14966
Immunogen	Synthesized peptide derived from the Internal region of Human Rab 7L1.
Raised In	Rabbit
Species Reactivity	Human,Mouse,Rat
Tested Applications	WB, ELISA; WB:1:500-1:2000, ELISA:1:20000
Form	Liquid
Conjugate	Non-conjugated
Storage Buffer	Liquid in PBS containing 50% glycerol, 0.5% BSA and 0.02% sodium azide.
Purification Method	The antibody was affinity-purified from rabbit antiserum by affinity-chromatography using epitope-specific immunogen.
Isotype	IgG
Alias	RAB7L1; Ras-related protein Rab-7L1; Rab-7-like protein 1
Immunogen Species	Homo sapiens (Human)
Target Names	RAB29

Image



Western Blot analysis of HT29 cells using Rab 7L1 Polyclonal Antibody

Usage

For Research Use Only. Not for use in diagnostic or therapeutic procedures.