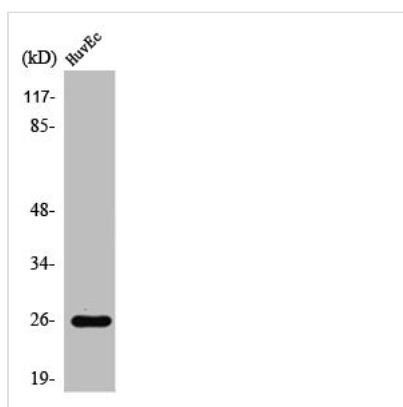




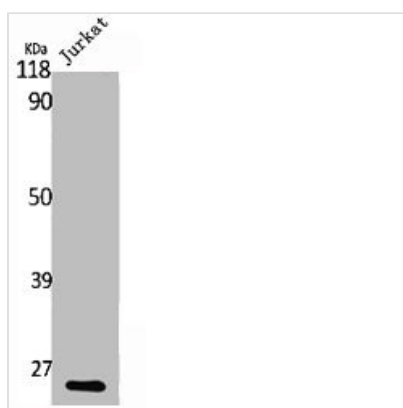
RABL2A Antibody

| | |
|----------------------------|---|
| Product Code | CSB-PA003900 |
| Storage | Upon receipt, store at -20°C or -80°C. Avoid repeated freeze. |
| Uniprot No. | Q9UBK7 |
| Immunogen | Synthesized peptide derived from the C-terminal region of Human Rab L2A. |
| Raised In | Rabbit |
| Species Reactivity | Human |
| Tested Applications | WB, ELISA; WB:1:500-1:2000, ELISA:1:20000 |
| Form | Liquid |
| Conjugate | Non-conjugated |
| Storage Buffer | Liquid in PBS containing 50% glycerol, 0.5% BSA and 0.02% sodium azide. |
| Purification Method | The antibody was affinity-purified from rabbit antiserum by affinity-chromatography using epitope-specific immunogen. |
| Isotype | IgG |
| Alias | RABL2A; Rab-like protein 2A |
| Immunogen Species | Homo sapiens (Human) |
| Target Names | RABL2A |

Image



Western Blot analysis of COLO205 cells using Rab L2A Polyclonal Antibody



Western Blot analysis of Jurkat cells using Rab L2A Polyclonal Antibody



Usage

For Research Use Only. Not for use in diagnostic or therapeutic procedures.