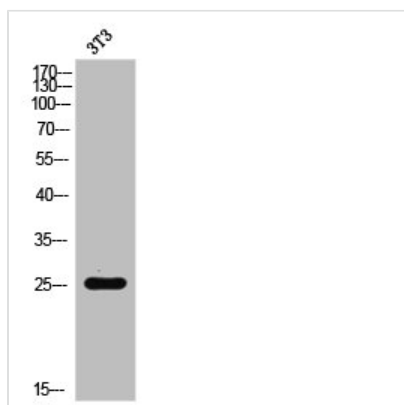




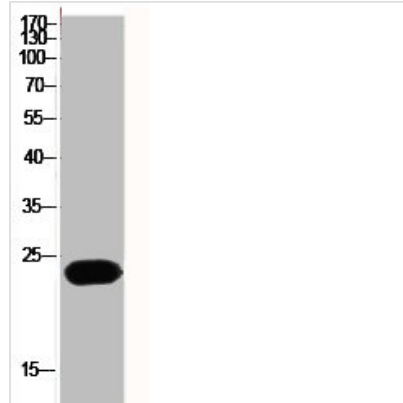
RAC1/RAC2/RAC3/CDC42 Antibody

Product Code	CSB-PA003908
Storage	Upon receipt, store at -20°C or -80°C. Avoid repeated freeze.
Uniprot No.	P63000/P15153/P60763/P60953
Immunogen	Synthesized peptide derived from Human Rac1/2/3/CDC42 around the non-phosphorylation site of S71.
Raised In	Rabbit
Species Reactivity	Human,Mouse,Rat
Tested Applications	WB, IHC, ELISA; WB:1:500-1:2000, IHC:1:100-1:300, ELISA:1:20000
Form	Liquid
Conjugate	Non-conjugated
Storage Buffer	Liquid in PBS containing 50% glycerol, 0.5% BSA and 0.02% sodium azide.
Purification Method	The antibody was affinity-purified from rabbit antiserum by affinity-chromatography using epitope-specific immunogen.
Isotype	IgG
Alias	RAC1; TC25; MIG5; Ras-related C3 botulinum toxin substrate 1; Cell migration-inducing gene 5 protein; Ras-like protein TC25; p21-Rac1; RAC2; Ras-related C3 botulinum toxin substrate 2; GX; Small G protein; p21-Rac2; RAC3; Ras-related C3 bot
Immunogen Species	Homo sapiens (Human)
Target Names	RAC1/RAC2/RAC3/CDC42

Image



Western Blot analysis of 3T3 cells using Rac1/2/3/CDC42 Polyclonal Antibody



Western Blot analysis of HeLa cells using Rac1/2/3/CDC42 Polyclonal Antibody

Usage

For Research Use Only. Not for use in diagnostic or therapeutic procedures.