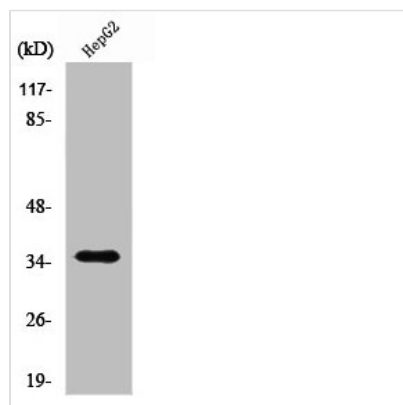




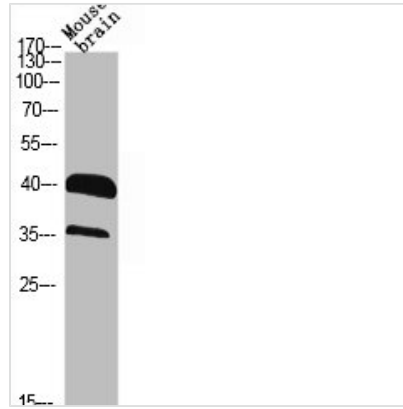
RRAGA/RRAGB Antibody

Product Code	CSB-PA003930
Storage	Upon receipt, store at -20°C or -80°C. Avoid repeated freeze.
Uniprot No.	Q7L523/Q5VZM2
Immunogen	Synthesized peptide derived from the C-terminal region of Human Rag A/B.
Raised In	Rabbit
Species Reactivity	Human,Mouse,Rat
Tested Applications	WB, IHC, ELISA; WB:1:500-1:2000, IHC:1:100-1:300, ELISA:1:20000
Form	Liquid
Conjugate	Non-conjugated
Storage Buffer	Liquid in PBS containing 50% glycerol, 0.5% BSA and 0.02% sodium azide.
Purification Method	The antibody was affinity-purified from rabbit antiserum by affinity-chromatography using epitope-specific immunogen.
Isotype	IgG
Alias	RRAGA; Ras-related GTP-binding protein A; Rag A; RagA; Adenovirus E3 14.7 kDa-interacting protein 1; FIP-1; RRAGB; Ras-related GTP-binding protein B; Rag B; RagB
Immunogen Species	Homo sapiens (Human)
Target Names	RRAGA/RRAGB

Image



Western Blot analysis of HepG2 cells using Rag A/B Polyclonal Antibody



Western Blot analysis of Jurkat NIH-3T3 cells using Rag A/B Polyclonal Antibody

Usage

For Research Use Only. Not for use in diagnostic or therapeutic procedures.