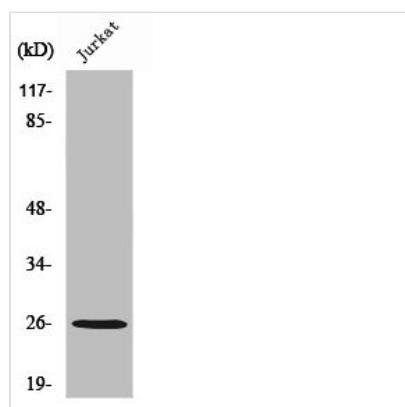




RAP2C Antibody

Product Code	CSB-PA003939
Storage	Upon receipt, store at -20°C or -80°C. Avoid repeated freeze.
Uniprot No.	Q9Y3L5
Immunogen	Synthesized peptide derived from the Internal region of Human Rap 2C.
Raised In	Rabbit
Species Reactivity	Human, Mouse
Tested Applications	WB, ELISA; WB:1:500-1:2000, ELISA:1:5000
Form	Liquid
Conjugate	Non-conjugated
Storage Buffer	Liquid in PBS containing 50% glycerol, 0.5% BSA and 0.02% sodium azide.
Purification Method	The antibody was affinity-purified from rabbit antiserum by affinity-chromatography using epitope-specific immunogen.
Isotype	IgG
Alias	RAP2C; Ras-related protein Rap-2c
Immunogen Species	Homo sapiens (Human)
Target Names	RAP2C

Image



Western Blot analysis of MCF7 cells using Rap 2C Polyclonal Antibody

Usage

For Research Use Only. Not for use in diagnostic or therapeutic procedures.