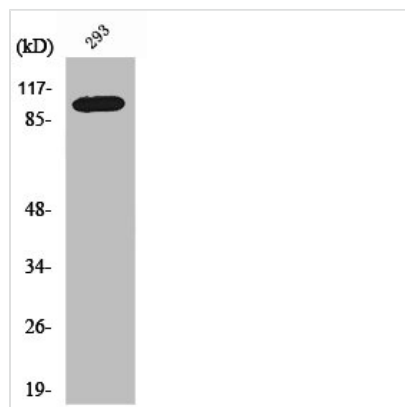




CDCA2 Antibody

Product Code	CSB-PA003960
Storage	Upon receipt, store at -20°C or -80°C. Avoid repeated freeze.
Uniprot No.	Q69YH5
Immunogen	Synthesized peptide derived from the Internal region of Human Repo-Man.
Raised In	Rabbit
Species Reactivity	Human
Tested Applications	WB, IHC, ELISA; WB:1:500-1:2000, IHC:1:100-1:300, ELISA:1:5000
Form	Liquid
Conjugate	Non-conjugated
Storage Buffer	Liquid in PBS containing 50% glycerol, 0.5% BSA and 0.02% sodium azide.
Purification Method	The antibody was affinity-purified from rabbit antiserum by affinity-chromatography using epitope-specific immunogen.
Isotype	IgG
Alias	CDCA2; Cell division cycle-associated protein 2; Recruits PP1 onto mitotic chromatin at anaphase protein; Repo-Man
Immunogen Species	Homo sapiens (Human)
Target Names	CDCA2

Image



Western Blot analysis of 293 cells using Repo-Man Polyclonal Antibody