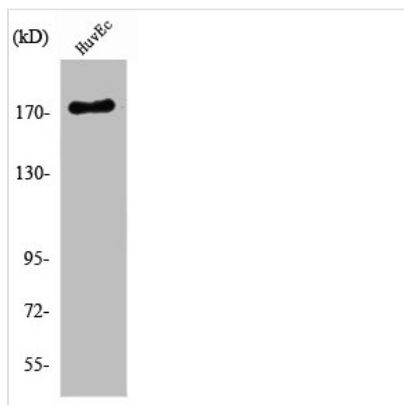




RET Antibody

Product Code	CSB-PA003963
Storage	Upon receipt, store at -20°C or -80°C. Avoid repeated freeze.
Uniprot No.	P07949
Immunogen	Synthesized peptide derived from Human Ret around the non-phosphorylation site of Y1062.
Raised In	Rabbit
Species Reactivity	Human,Mouse,Rat
Tested Applications	WB, ELISA; WB:1:500-1:2000, ELISA:1:10000
Form	Liquid
Conjugate	Non-conjugated
Storage Buffer	Liquid in PBS containing 50% glycerol, 0.5% BSA and 0.02% sodium azide.
Purification Method	The antibody was affinity-purified from rabbit antiserum by affinity-chromatography using epitope-specific immunogen.
Isotype	IgG
Alias	RET; CDHF12; CDHR16; PTC; RET51; Proto-oncogene tyrosine-protein kinase receptor Ret; Cadherin family member 12; Proto-oncogene c-Ret
Immunogen Species	Homo sapiens (Human)
Target Names	RET

Image



Western Blot analysis of HuvEc cells using Ret Polyclonal Antibody

Usage

For Research Use Only. Not for use in diagnostic or therapeutic procedures.