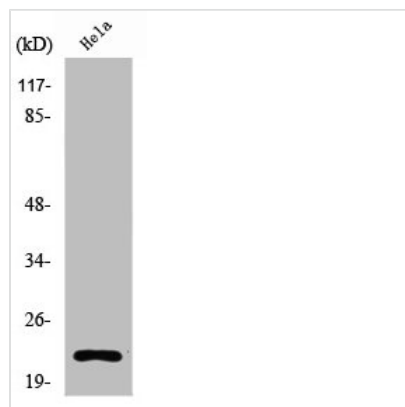




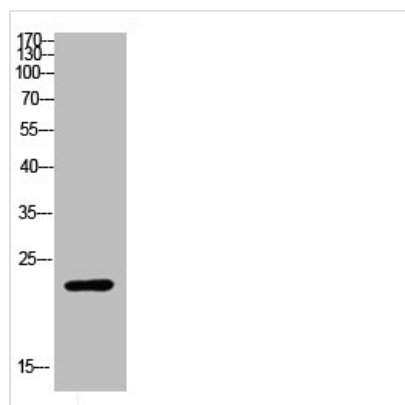
RPL17 Antibody

Product Code	CSB-PA003980
Storage	Upon receipt, store at -20°C or -80°C. Avoid repeated freeze.
Uniprot No.	P18621
Immunogen	Synthesized peptide derived from the Internal region of Human Ribosomal Protein L17.
Raised In	Rabbit
Species Reactivity	Human,Mouse,Rat,Monkey
Tested Applications	WB, IHC, ELISA; WB:1:500-1:2000, IHC:1:100-1:300, ELISA:1:10000
Form	Liquid
Conjugate	Non-conjugated
Storage Buffer	Liquid in PBS containing 50% glycerol, 0.5% BSA and 0.02% sodium azide.
Purification Method	The antibody was affinity-purified from rabbit antiserum by affinity-chromatography using epitope-specific immunogen.
Isotype	IgG
Alias	RPL17; 60S ribosomal protein L17; 60S ribosomal protein L23; PD-1
Immunogen Species	Homo sapiens (Human)
Target Names	RPL17

Image



Western Blot analysis of COS7 cells using Ribosomal Protein L17 Polyclonal Antibody



Western Blot analysis of customer's (cat sample)
using Ribosomal Protein L17 Polyclonal
Antibody