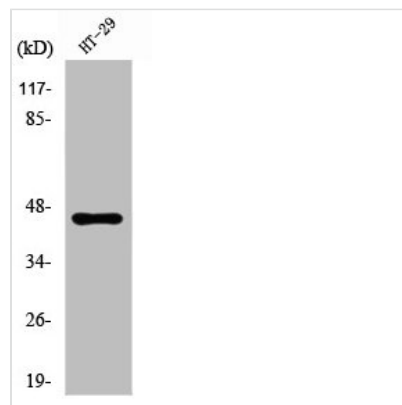




RPL3 Antibody

Product Code	CSB-PA003985
Storage	Upon receipt, store at -20°C or -80°C. Avoid repeated freeze.
Uniprot No.	P39023
Immunogen	Synthesized peptide derived from the Internal region of Human Ribosomal Protein L3.
Raised In	Rabbit
Species Reactivity	Human,Mouse,Rat
Tested Applications	WB, IHC, ELISA; WB:1:500-1:2000, IHC:1:100-1:300, ELISA:1:20000
Form	Liquid
Conjugate	Non-conjugated
Storage Buffer	Liquid in PBS containing 50% glycerol, 0.5% BSA and 0.02% sodium azide.
Purification Method	The antibody was affinity-purified from rabbit antiserum by affinity-chromatography using epitope-specific immunogen.
Isotype	IgG
Alias	RPL3; OK/SW-cl.32; 60S ribosomal protein L3; HIV-1 TAR RNA-binding protein B; TARBP-B
Immunogen Species	Homo sapiens (Human)
Target Names	RPL3

Image



Western Blot analysis of HT29 cells using Ribosomal Protein L3 Polyclonal Antibody

Usage For Research Use Only. Not for use in diagnostic or therapeutic procedures.