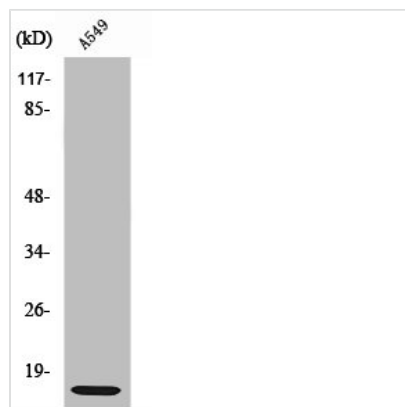




RPL30 Antibody

Product Code	CSB-PA003986
Storage	Upon receipt, store at -20°C or -80°C. Avoid repeated freeze.
Uniprot No.	P62888
Immunogen	Synthesized peptide derived from the C-terminal region of Human Ribosomal Protein L30.
Raised In	Rabbit
Species Reactivity	Human,Mouse,Rat,Monkey
Tested Applications	WB, IHC, ELISA; WB:1:500-1:2000, IHC:1:100-1:300, ELISA:1:40000
Form	Liquid
Conjugate	Non-conjugated
Storage Buffer	Liquid in PBS containing 50% glycerol, 0.5% BSA and 0.02% sodium azide.
Purification Method	The antibody was affinity-purified from rabbit antiserum by affinity-chromatography using epitope-specific immunogen.
Isotype	IgG
Alias	RPL30; 60S ribosomal protein L30
Immunogen Species	Homo sapiens (Human)
Target Names	RPL30

Image



Western Blot analysis of RAW264.7 cells using Ribosomal Protein L30 Polyclonal Antibody

Usage

For Research Use Only. Not for use in diagnostic or therapeutic procedures.