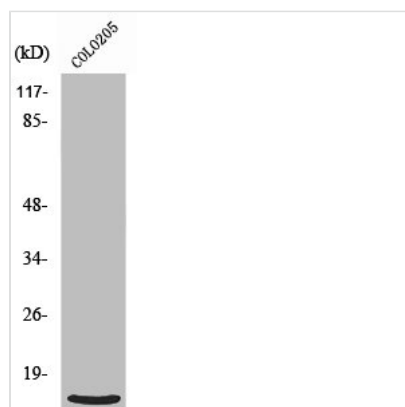




RPL39 Antibody

Product Code	CSB-PA003994
Storage	Upon receipt, store at -20°C or -80°C. Avoid repeated freeze.
Uniprot No.	P62891
Immunogen	Synthesized peptide derived from the N-terminal region of Human Ribosomal Protein L39.
Raised In	Rabbit
Species Reactivity	Human,Mouse,Rat
Tested Applications	WB, IHC, IF, ELISA; WB:1:500-1:2000, IHC:1:100-1:300, IF:1:200-1:1000, ELISA:1:40000
Form	Liquid
Conjugate	Non-conjugated
Storage Buffer	Liquid in PBS containing 50% glycerol, 0.5% BSA and 0.02% sodium azide.
Purification Method	The antibody was affinity-purified from rabbit antiserum by affinity-chromatography using epitope-specific immunogen.
Isotype	IgG
Product Type	Polyclonal Antibody
Immunogen Species	Homo sapiens (Human)
Target Names	RPL39

Image



Western Blot analysis of HepG2 cells using Ribosomal Protein L39 Polyclonal Antibody

Usage For Research Use Only. Not for use in diagnostic or therapeutic procedures.