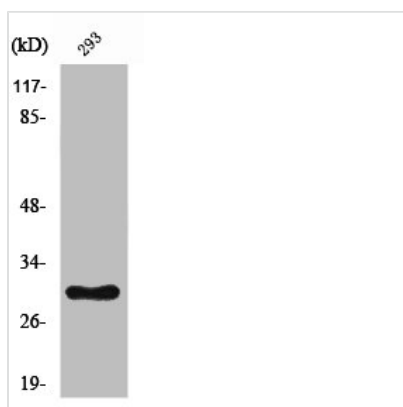




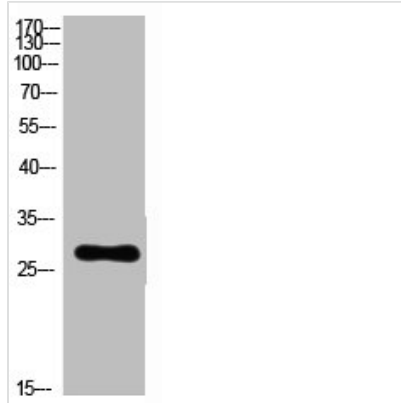
RPL7 Antibody

Product Code	CSB-PA003997
Storage	Upon receipt, store at -20°C or -80°C. Avoid repeated freeze.
Uniprot No.	P18124
Immunogen	Synthesized peptide derived from the C-terminal region of Human Ribosomal Protein L7.
Raised In	Rabbit
Species Reactivity	Human,Mouse,Rat
Tested Applications	WB, IHC, ELISA; WB:1:500-1:2000, IHC:1:100-1:300, ELISA:1:10000
Form	Liquid
Conjugate	Non-conjugated
Storage Buffer	Liquid in PBS containing 50% glycerol, 0.5% BSA and 0.02% sodium azide.
Purification Method	The antibody was affinity-purified from rabbit antiserum by affinity-chromatography using epitope-specific immunogen.
Isotype	IgG
Alias	RPL7; 60S ribosomal protein L7
Immunogen Species	Homo sapiens (Human)
Target Names	RPL7

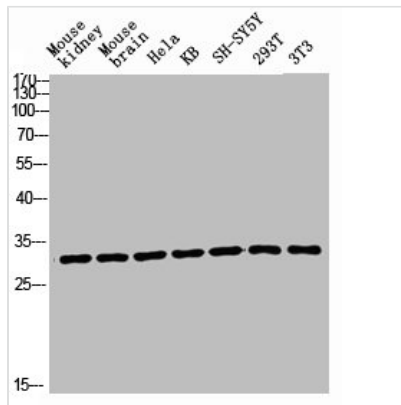
Image



Western Blot analysis of HeLa cells using Ribosomal Protein L7 Polyclonal Antibody



Western Blot analysis of customer's(cat sample) using Ribosomal Protein L7 Polyclonal Antibody.



Western blot analysis of Mouse-kidney mouse-brain HELA KB SH-SY5Y 293T 3T3 lysis using Ribosomal Protein L7 antibody.

Usage

For Research Use Only. Not for use in diagnostic or therapeutic procedures.