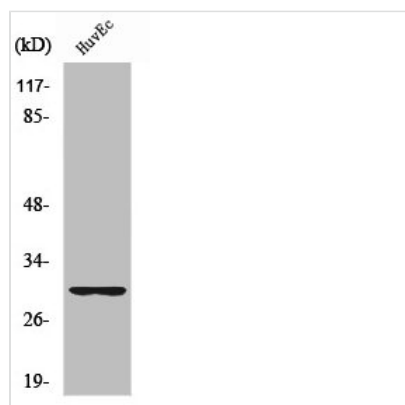




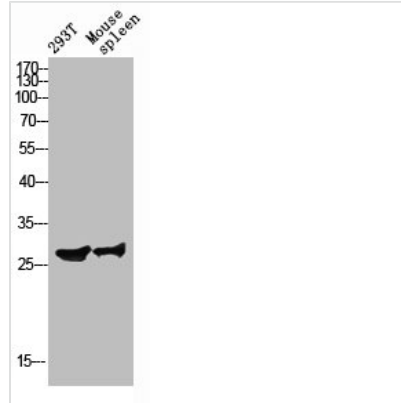
RPS4Y1 Antibody

Product Code	CSB-PA004004
Storage	Upon receipt, store at -20°C or -80°C. Avoid repeated freeze.
Uniprot No.	P22090
Immunogen	Synthesized peptide derived from the C-terminal region of Human Ribosomal Protein S4Y1.
Raised In	Rabbit
Species Reactivity	Human
Tested Applications	WB, IHC, IF, ELISA; WB:1:500-1:2000, IHC:1:100-1:300, IF:1:200-1:1000, ELISA:1:20000
Form	Liquid
Conjugate	Non-conjugated
Storage Buffer	Liquid in PBS containing 50% glycerol, 0.5% BSA and 0.02% sodium azide.
Purification Method	The antibody was affinity-purified from rabbit antiserum by affinity-chromatography using epitope-specific immunogen.
Isotype	IgG
Alias	RPS4Y1; RPS4Y; 40S ribosomal protein S4; Y isoform 1
Immunogen Species	Homo sapiens (Human)
Target Names	RPS4Y1

Image



Western Blot analysis of HuvEc cells using Ribosomal Protein S4Y1 Polyclonal Antibody



Western blot analysis of 293T mouse-spleen lysis using Ribosomal Protein S4Y1 antibody.

Usage

For Research Use Only. Not for use in diagnostic or therapeutic procedures.