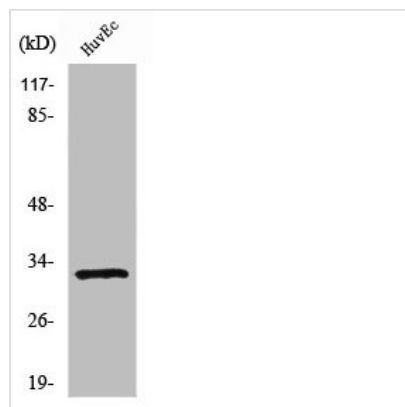




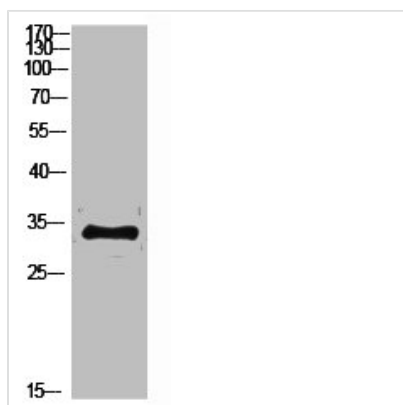
RPS6 Antibody

Product Code	CSB-PA004005
Storage	Upon receipt, store at -20°C or -80°C. Avoid repeated freeze.
Uniprot No.	P62753
Immunogen	Synthesized peptide derived from Human Ribosomal Protein S6 around the non-phosphorylation site of S235.
Raised In	Rabbit
Species Reactivity	Human,Mouse,Rat
Tested Applications	WB, IF, ELISA; WB:1:500-1:2000, IF:1:200-1:1000, ELISA:1:20000
Form	Liquid
Conjugate	Non-conjugated
Storage Buffer	Liquid in PBS containing 50% glycerol, 0.5% BSA and 0.02% sodium azide.
Purification Method	The antibody was affinity-purified from rabbit antiserum by affinity-chromatography using epitope-specific immunogen.
Isotype	IgG
Alias	RPS6; OK/SW-cl.2; 40S ribosomal protein S6; Phosphoprotein NP33
Immunogen Species	Homo sapiens (Human)
Target Names	RPS6

Image



Western Blot analysis of HuvEc cells using Ribosomal Protein S6 Polyclonal Antibody



Western Blot analysis of customer's(cat sample)
using Ribosomal Protein S6 Polyclonal Antibody.