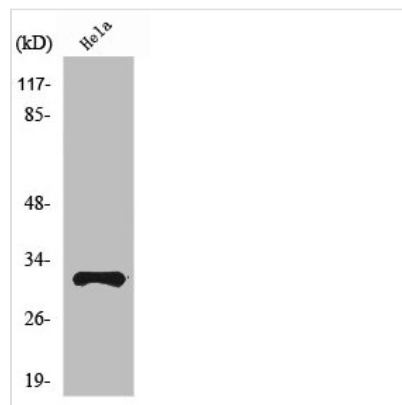




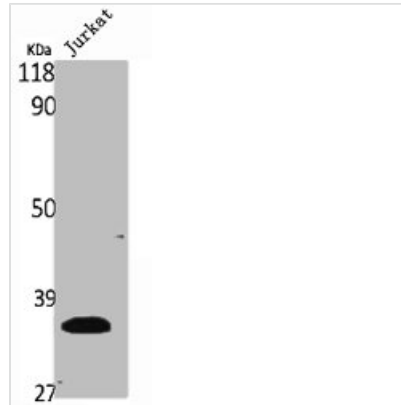
# RPS6 Antibody

<b>Product Code</b>	CSB-PA004006
<b>Storage</b>	Upon receipt, store at -20°C or -80°C. Avoid repeated freeze.
<b>Uniprot No.</b>	P62753
<b>Immunogen</b>	Synthesized peptide derived from Human Ribosomal Protein S6 around the non-phosphorylation site of S240.
<b>Raised In</b>	Rabbit
<b>Species Reactivity</b>	Human,Mouse,Rat
<b>Tested Applications</b>	WB, IHC, IF, ELISA; WB:1:500-1:2000, IHC:1:100-1:300, IF:1:200-1:1000, ELISA:1:5000
<b>Form</b>	Liquid
<b>Conjugate</b>	Non-conjugated
<b>Storage Buffer</b>	Liquid in PBS containing 50% glycerol, 0.5% BSA and 0.02% sodium azide.
<b>Purification Method</b>	The antibody was affinity-purified from rabbit antiserum by affinity-chromatography using epitope-specific immunogen.
<b>Isotype</b>	IgG
<b>Alias</b>	RPS6; OK/SW-cl.2; 40S ribosomal protein S6; Phosphoprotein NP33
<b>Immunogen Species</b>	Homo sapiens (Human)
<b>Target Names</b>	RPS6

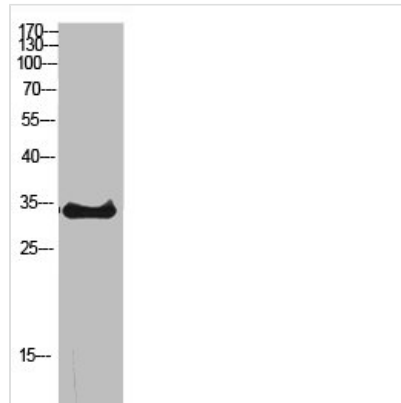
## Image



Western Blot analysis of HeLa cells using Ribosomal Protein S6 Polyclonal Antibody



Western Blot analysis of Jurkat cells using Ribosomal Protein S6 Polyclonal Antibody



Western Blot analysis of customer's (cat sample) using Ribosomal Protein S6 Polyclonal Antibody

**Usage**

For Research Use Only. Not for use in diagnostic or therapeutic procedures.