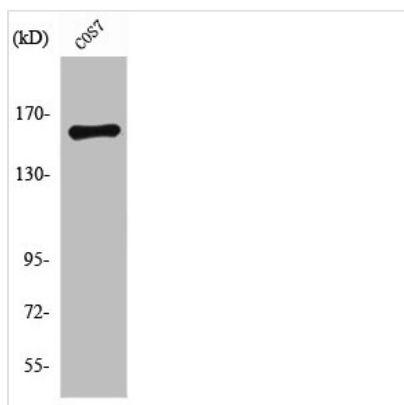




ROCK1 Antibody

Product Code	CSB-PA004017
Storage	Upon receipt, store at -20°C or -80°C. Avoid repeated freeze.
Uniprot No.	Q13464
Immunogen	Synthesized peptide derived from the Internal region of Human Rock-1.
Raised In	Rabbit
Species Reactivity	Human, Mouse, Rat, Monkey
Tested Applications	WB, IHC, ELISA; WB:1:500-1:2000, IHC:1:100-1:300, IHC:1:200-1:1000, ELISA:1:20000
Form	Liquid
Conjugate	Non-conjugated
Storage Buffer	Liquid in PBS containing 50% glycerol, 0.5% BSA and 0.02% sodium azide.
Purification Method	The antibody was affinity-purified from rabbit antiserum by affinity-chromatography using epitope-specific immunogen.
Isotype	IgG
Alias	ROCK1; Rho-associated protein kinase 1; Renal carcinoma antigen NY-REN-35; Rho-associated; coiled-coil-containing protein kinase 1; Rho-associated, coiled-coil-containing protein kinase I; ROCK-I; p160 ROCK-1; p160ROCK
Immunogen Species	Homo sapiens (Human)
Target Names	ROCK1

Image



Western Blot analysis of COS7 cells using Rock-1 Polyclonal Antibody

Usage

For Research Use Only. Not for use in diagnostic or therapeutic procedures.