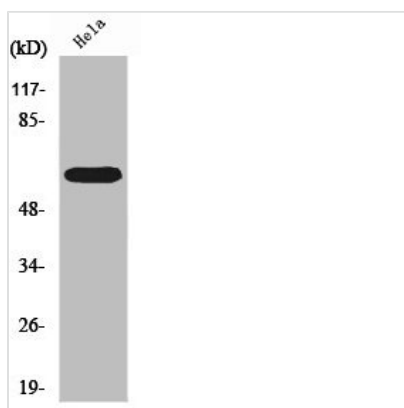




RORA Antibody

Product Code	CSB-PA004020
Storage	Upon receipt, store at -20°C or -80°C. Avoid repeated freeze.
Uniprot No.	P35398
Immunogen	Synthesized peptide derived from the N-terminal region of Human ROR α .
Raised In	Rabbit
Species Reactivity	Human,Monkey
Tested Applications	WB, IHC, IF, ELISA; WB:1:500-1:2000, IHC:1:100-1:300, IF:1:200-1:1000, ELISA:1:40000
Form	Liquid
Conjugate	Non-conjugated
Storage Buffer	Liquid in PBS containing 50% glycerol, 0.5% BSA and 0.02% sodium azide.
Purification Method	The antibody was affinity-purified from rabbit antiserum by affinity-chromatography using epitope-specific immunogen.
Isotype	IgG
Alias	RORA; NR1F1; RZRA; Nuclear receptor ROR-alpha; Nuclear receptor RZR-alpha; Nuclear receptor subfamily 1 group F member 1; Retinoid-related orphan receptor-alpha
Immunogen Species	Homo sapiens (Human)
Target Names	RORA

Image



Western Blot analysis of HeLa cells using ROR α Polyclonal Antibody

Usage For Research Use Only. Not for use in diagnostic or therapeutic procedures.