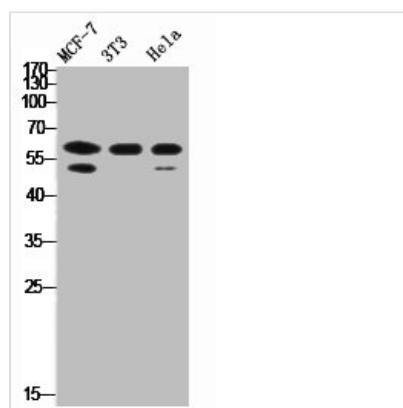




RORC Antibody

Product Code	CSB-PA004023
Storage	Upon receipt, store at -20°C or -80°C. Avoid repeated freeze.
Uniprot No.	P51449
Immunogen	Synthesized peptide derived from the Internal region of Human ROR γ .
Raised In	Rabbit
Species Reactivity	Human,Mouse
Tested Applications	WB, ELISA; WB:1:500-1:2000, ELISA:1:40000
Form	Liquid
Conjugate	Non-conjugated
Storage Buffer	Liquid in PBS containing 50% glycerol, 0.5% BSA and 0.02% sodium azide.
Purification Method	The antibody was affinity-purified from rabbit antiserum by affinity-chromatography using epitope-specific immunogen.
Isotype	IgG
Alias	RORC; NR1F3; RORG; RZRG; Nuclear receptor ROR-gamma; Nuclear receptor RZR-gamma; Nuclear receptor subfamily 1 group F member 3; Retinoid-related orphan receptor-gamma
Immunogen Species	Homo sapiens (Human)
Target Names	RORC

Image



Western Blot analysis of MCF7 HELA NIH-3T3 cells using ROR γ Polyclonal Antibody