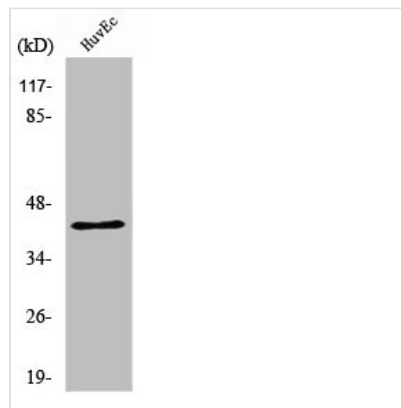




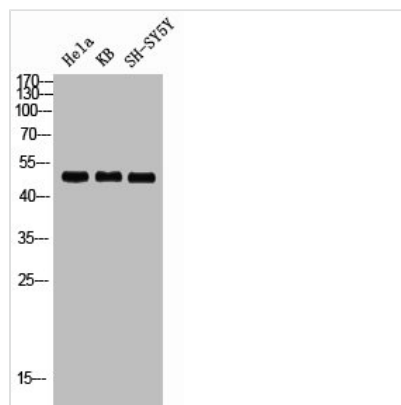
RRS1 Antibody

| | |
|----------------------------|---|
| Product Code | CSB-PA004028 |
| Storage | Upon receipt, store at -20°C or -80°C. Avoid repeated freeze. |
| Uniprot No. | Q15050 |
| Immunogen | Synthesized peptide derived from the Internal region of Human RRS1. |
| Raised In | Rabbit |
| Species Reactivity | Human,Mouse,Rat |
| Tested Applications | WB, IHC, ELISA; WB:1:500-1:2000, IHC:1:100-1:300, ELISA:1:10000 |
| Form | Liquid |
| Conjugate | Non-conjugated |
| Storage Buffer | Liquid in PBS containing 50% glycerol, 0.5% BSA and 0.02% sodium azide. |
| Purification Method | The antibody was affinity-purified from rabbit antiserum by affinity-chromatography using epitope-specific immunogen. |
| Isotype | IgG |
| Alias | RRS1; KIAA0112; RRR; Ribosome biogenesis regulatory protein homolog |
| Immunogen Species | Homo sapiens (Human) |
| Target Names | RRS1 |

Image



Western Blot analysis of HuvEc cells using RRS1 Polyclonal Antibody



Western blot analysis of HELA KB SH-SY5Y lysis using RRS1 antibody.



Usage

For Research Use Only. Not for use in diagnostic or therapeutic procedures.