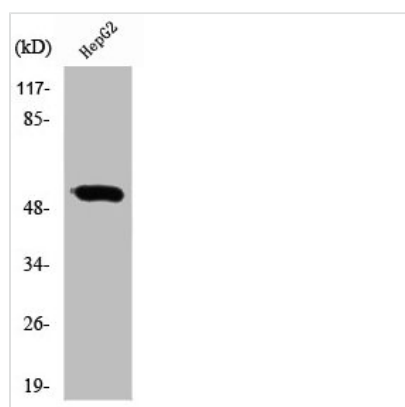




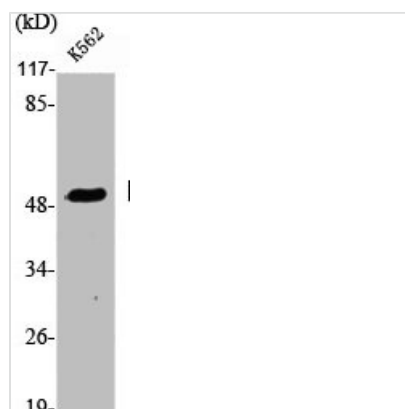
RXRG Antibody

Product Code	CSB-PA004040
Storage	Upon receipt, store at -20°C or -80°C. Avoid repeated freeze.
Uniprot No.	P48443
Immunogen	Synthesized peptide derived from the Internal region of Human RXR γ .
Raised In	Rabbit
Species Reactivity	Human, Mouse
Tested Applications	WB, IHC, IF, ELISA; WB:1:500-1:2000, IHC:1:100-1:300, IF:1:200-1:1000, ELISA:1:10000
Form	Liquid
Conjugate	Non-conjugated
Storage Buffer	Liquid in PBS containing 50% glycerol, 0.5% BSA and 0.02% sodium azide.
Purification Method	The antibody was affinity-purified from rabbit antiserum by affinity-chromatography using epitope-specific immunogen.
Isotype	IgG
Alias	RXRG; NR2B3; Retinoic acid receptor RXR-gamma; Nuclear receptor subfamily 2 group B member 3; Retinoid X receptor gamma
Immunogen Species	Homo sapiens (Human)
Target Names	RXRG

Image



Western Blot analysis of HepG2 cells using RXR γ Polyclonal Antibody



Western Blot analysis of K562 cells using RXR γ Polyclonal Antibody