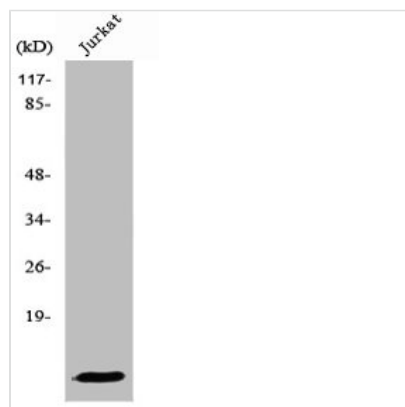




S100A10 Antibody

Product Code	CSB-PA004043
Storage	Upon receipt, store at -20°C or -80°C. Avoid repeated freeze.
Uniprot No.	P60903
Immunogen	Synthesized peptide derived from the Internal region of Human S-100A10.
Raised In	Rabbit
Species Reactivity	Human,Mouse,Rat
Tested Applications	WB, IHC, ELISA; WB:1:500-1:2000, IHC:1:100-1:300, ELISA:1:40000
Form	Liquid
Conjugate	Non-conjugated
Storage Buffer	Liquid in PBS containing 50% glycerol, 0.5% BSA and 0.02% sodium azide.
Purification Method	The antibody was affinity-purified from rabbit antiserum by affinity-chromatography using epitope-specific immunogen.
Isotype	IgG
Alias	S100A10; ANX2LG; CAL1L; CLP11; Protein S100-A10; Calpactin I light chain; Calpactin-1 light chain; Cellular ligand of annexin II; S100 calcium-binding protein A10; p10 protein; p11
Immunogen Species	Homo sapiens (Human)
Target Names	S100A10

Image



Western Blot analysis of Jurkat cells using S-100A10 Polyclonal Antibody