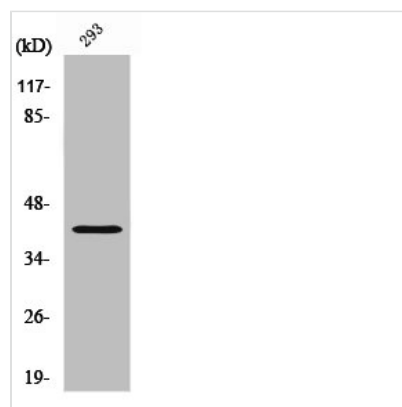




SAE1 Antibody

Product Code	CSB-PA004045
Storage	Upon receipt, store at -20°C or -80°C. Avoid repeated freeze.
Uniprot No.	Q9UBE0
Immunogen	Synthesized peptide derived from the Internal region of Human SAE1.
Raised In	Rabbit
Species Reactivity	Human,Mouse,Rat
Tested Applications	WB, IHC, IF, ELISA; WB:1:500-1:2000, IHC:1:100-1:300, IF:1:200-1:1000, ELISA:1:20000
Form	Liquid
Conjugate	Non-conjugated
Storage Buffer	Liquid in PBS containing 50% glycerol, 0.5% BSA and 0.02% sodium azide.
Purification Method	The antibody was affinity-purified from rabbit antiserum by affinity-chromatography using epitope-specific immunogen.
Isotype	IgG
Alias	SAE1; AOS1; SUA1; UBLE1A; SUMO-activating enzyme subunit 1; Ubiquitin-like 1-activating enzyme E1A
Immunogen Species	Homo sapiens (Human)
Target Names	SAE1

Image



Western Blot analysis of 293 cells using SAE1 Polyclonal Antibody

Usage For Research Use Only. Not for use in diagnostic or therapeutic procedures.