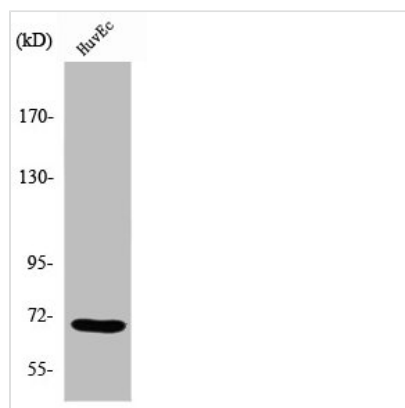




KHDRBS1 Antibody

Product Code	CSB-PA004046
Storage	Upon receipt, store at -20°C or -80°C. Avoid repeated freeze.
Uniprot No.	Q07666
Immunogen	Synthesized peptide derived from the Internal region of Human Sam 68.
Raised In	Rabbit
Species Reactivity	Human,Mouse,Rat
Tested Applications	WB, ELISA; WB:1:500-1:2000, ELISA:1:10000
Form	Liquid
Conjugate	Non-conjugated
Storage Buffer	Liquid in PBS containing 50% glycerol, 0.5% BSA and 0.02% sodium azide.
Purification Method	The antibody was affinity-purified from rabbit antiserum by affinity-chromatography using epitope-specific immunogen.
Isotype	IgG
Alias	KHDRBS1; SAM68; KH domain-containing; RNA-binding, signal transduction-associated protein 1; GAP-associated tyrosine phosphoprotein p62; Src-associated in mitosis 68 kDa protein; Sam68; p21 Ras GTPase-activating protein-associated p62; p68
Immunogen Species	Homo sapiens (Human)
Target Names	KHDRBS1

Image



Western Blot analysis of COLO205 cells using Sam 68 Polyclonal Antibody