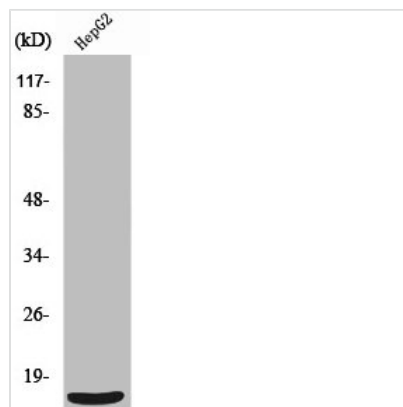




SF3B6 Antibody

| | |
|----------------------------|---|
| Product Code | CSB-PA004047 |
| Storage | Upon receipt, store at -20°C or -80°C. Avoid repeated freeze. |
| Uniprot No. | Q9Y3B4 |
| Immunogen | Synthesized peptide derived from the C-terminal region of Human SAP 14. |
| Raised In | Rabbit |
| Species Reactivity | Human, Mouse |
| Tested Applications | WB, ELISA; WB:1:500-1:2000, ELISA:1:40000 |
| Form | Liquid |
| Conjugate | Non-conjugated |
| Storage Buffer | Liquid in PBS containing 50% glycerol, 0.5% BSA and 0.02% sodium azide. |
| Purification Method | The antibody was affinity-purified from rabbit antiserum by affinity-chromatography using epitope-specific immunogen. |
| Isotype | IgG |
| Alias | SF3B14; CGI-110; HSPC175; HT006; Pre-mRNA branch site protein p14; SF3b 14 kDa subunit |
| Immunogen Species | Homo sapiens (Human) |
| Target Names | SF3B6 |

Image



Western Blot analysis of HepG2 cells using SAP 14 Polyclonal Antibody

Usage

For Research Use Only. Not for use in diagnostic or therapeutic procedures.