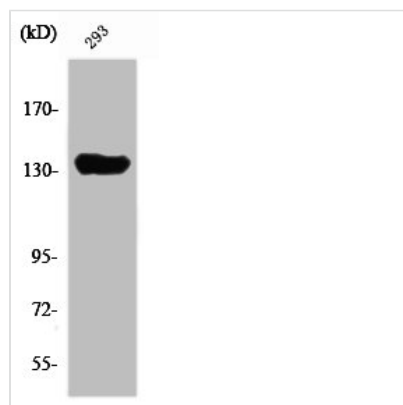




SCAF1 Antibody

Product Code	CSB-PA004050
Storage	Upon receipt, store at -20°C or -80°C. Avoid repeated freeze.
Uniprot No.	Q9H7N4
Immunogen	Synthesized peptide derived from the N-terminal region of Human SCAF1.
Raised In	Rabbit
Species Reactivity	Human, Mouse
Tested Applications	WB, ELISA; WB:1:500-1:2000, ELISA:1:40000
Form	Liquid
Conjugate	Non-conjugated
Storage Buffer	Liquid in PBS containing 50% glycerol, 0.5% BSA and 0.02% sodium azide.
Purification Method	The antibody was affinity-purified from rabbit antiserum by affinity-chromatography using epitope-specific immunogen.
Isotype	IgG
Alias	SCAF1; SFRS19; SRA1; Splicing factor; arginine/serine-rich 19; SR-related and CTD-associated factor 1; SR-related-CTD-associated factor; SCAF; Serine arginine-rich pre-mRNA splicing factor SR-A1; SR-A1
Immunogen Species	Homo sapiens (Human)
Target Names	SCAF1

Image



Western Blot analysis of Jurkat cells using SCAF1 Polyclonal Antibody

Usage For Research Use Only. Not for use in diagnostic or therapeutic procedures.