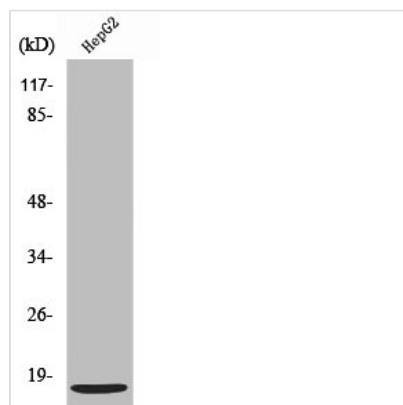




CXCL12 Antibody

Product Code	CSB-PA004056
Storage	Upon receipt, store at -20°C or -80°C. Avoid repeated freeze.
Uniprot No.	P48061
Immunogen	Synthesized peptide derived from the C-terminal region of Human SDF-1.
Raised In	Rabbit
Species Reactivity	Human,Mouse,Rat
Tested Applications	WB, IHC, ELISA; WB:1:500-1:2000, IHC:1:100-1:300, ELISA:1:40000
Form	Liquid
Conjugate	Non-conjugated
Storage Buffer	Liquid in PBS containing 50% glycerol, 0.5% BSA and 0.02% sodium azide.
Purification Method	The antibody was affinity-purified from rabbit antiserum by affinity-chromatography using epitope-specific immunogen.
Isotype	IgG
Alias	CXCL12; SDF1; SDF1A; SDF1B; Stromal cell-derived factor 1; SDF-1; hSDF-1; C-X-C motif chemokine 12; Intercrine reduced in hepatomas; IRH; hIRH; Pre-B cell growth-stimulating factor; PBSF
Immunogen Species	Homo sapiens (Human)
Target Names	CXCL12

Image



Western Blot analysis of HepG2 cells using SDF-1 Polyclonal Antibody



Western Blot analysis of KB HELA MCF-7 cells using SDF-1 Polyclonal Antibody