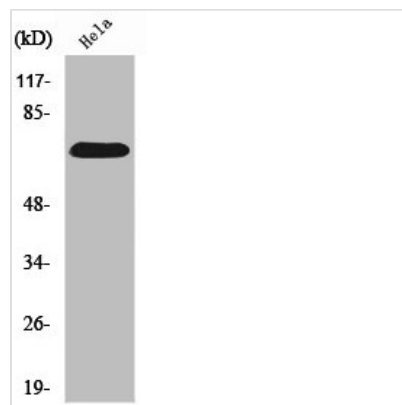




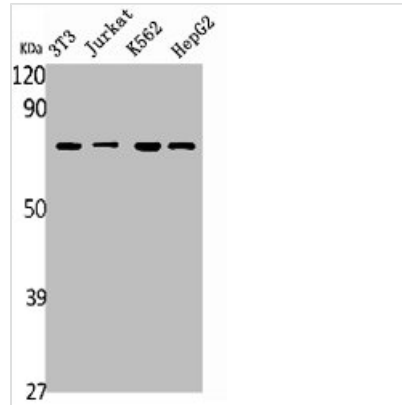
# SDHA Antibody

<b>Product Code</b>	CSB-PA004057
<b>Storage</b>	Upon receipt, store at -20°C or -80°C. Avoid repeated freeze.
<b>Uniprot No.</b>	P31040
<b>Immunogen</b>	Synthesized peptide derived from the C-terminal region of Human SDHA.
<b>Raised In</b>	Rabbit
<b>Species Reactivity</b>	Human,Mouse,Rat
<b>Tested Applications</b>	WB, ELISA; WB:1:500-1:2000, ELISA:1:10000
<b>Form</b>	Liquid
<b>Conjugate</b>	Non-conjugated
<b>Storage Buffer</b>	Liquid in PBS containing 50% glycerol, 0.5% BSA and 0.02% sodium azide.
<b>Purification Method</b>	The antibody was affinity-purified from rabbit antiserum by affinity-chromatography using epitope-specific immunogen.
<b>Isotype</b>	IgG
<b>Alias</b>	SDHA; SDH2; SDHF; Succinate dehydrogenase [ubiquinone] flavoprotein subunit; mitochondrial; Flavoprotein subunit of complex II; Fp
<b>Immunogen Species</b>	Homo sapiens (Human)
<b>Target Names</b>	SDHA

## Image



Western Blot analysis of HepG2 cells using SDHA Polyclonal Antibody



Western Blot analysis of NIH-3T3 Jurkat K562 HepG2 RAT-KIDNEY cells using SDHA Polyclonal Antibody

### Usage

For Research Use Only. Not for use in diagnostic or therapeutic procedures.