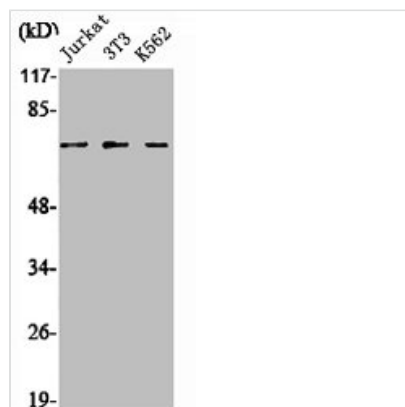




SENP1 Antibody

Product Code	CSB-PA004062
Storage	Upon receipt, store at -20°C or -80°C. Avoid repeated freeze.
Uniprot No.	Q9P0U3
Immunogen	Synthesized peptide derived from the N-terminal region of Human SENP1.
Raised In	Rabbit
Species Reactivity	Human,Mouse
Tested Applications	WB, IHC, ELISA; WB:1:500-1:2000, IHC:1:100-1:300, ELISA:1:20000
Form	Liquid
Conjugate	Non-conjugated
Storage Buffer	Liquid in PBS containing 50% glycerol, 0.5% BSA and 0.02% sodium azide.
Purification Method	The antibody was affinity-purified from rabbit antiserum by affinity-chromatography using epitope-specific immunogen.
Isotype	IgG
Alias	SENP1; Sentrin-specific protease 1; Sentrin/SUMO-specific protease SENP1
Immunogen Species	Homo sapiens (Human)
Target Names	SENP1

Image



Western Blot analysis of Jurkat NIH-3T3 K562 cells using SENP1 Polyclonal Antibody