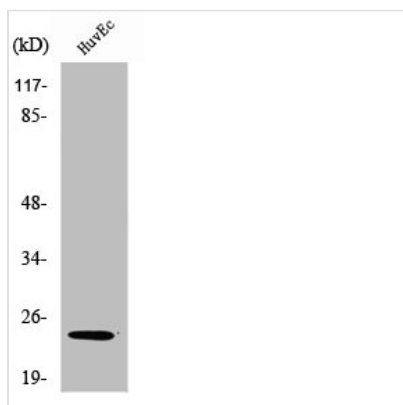




SENP8 Antibody

Product Code	CSB-PA004065
Storage	Upon receipt, store at -20°C or -80°C. Avoid repeated freeze.
Uniprot No.	Q96LD8
Immunogen	Synthesized peptide derived from the C-terminal region of Human SENP8.
Raised In	Rabbit
Species Reactivity	Human, Mouse, Rat
Tested Applications	WB, IHC, ELISA; WB:1:500-1:2000, IHC:1:100-1:300, ELISA:1:10000
Form	Liquid
Conjugate	Non-conjugated
Storage Buffer	Liquid in PBS containing 50% glycerol, 0.5% BSA and 0.02% sodium azide.
Purification Method	The antibody was affinity-purified from rabbit antiserum by affinity-chromatography using epitope-specific immunogen.
Isotype	IgG
Alias	SENP8; DEN1; NEDP1; PRSC2; FKSG8; Sentrin-specific protease 8; Deneddylase-1; NEDD8-specific protease 1; Protease; cysteine 2; Sentrin/SUMO-specific protease SENP8
Immunogen Species	Homo sapiens (Human)
Target Names	SENP8

Image



Western Blot analysis of HuvEc cells using SENP8 Polyclonal Antibody

Usage For Research Use Only. Not for use in diagnostic or therapeutic procedures.