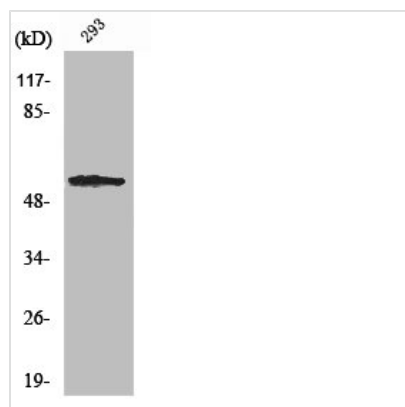




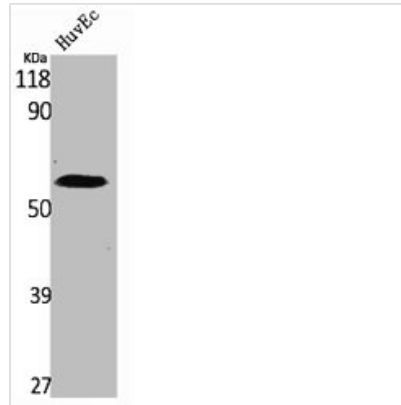
# SGK1 Antibody

<b>Product Code</b>	CSB-PA004076
<b>Storage</b>	Upon receipt, store at -20°C or -80°C. Avoid repeated freeze.
<b>Uniprot No.</b>	O00141
<b>Immunogen</b>	Synthesized peptide derived from Human SGK1 around the non-phosphorylation site of S78.
<b>Raised In</b>	Rabbit
<b>Species Reactivity</b>	Human,Mouse,Rat
<b>Tested Applications</b>	WB, IHC, IF, ELISA; WB:1:500-1:2000, IHC:1:100-1:300, IF:1:200-1:1000, ELISA:1:5000
<b>Form</b>	Liquid
<b>Conjugate</b>	Non-conjugated
<b>Storage Buffer</b>	Liquid in PBS containing 50% glycerol, 0.5% BSA and 0.02% sodium azide.
<b>Purification Method</b>	The antibody was affinity-purified from rabbit antiserum by affinity-chromatography using epitope-specific immunogen.
<b>Isotype</b>	IgG
<b>Alias</b>	SGK1; SGK; Serine/threonine-protein kinase Sgk1; Serum/glucocorticoid-regulated kinase 1
<b>Immunogen Species</b>	Homo sapiens (Human)
<b>Target Names</b>	SGK1

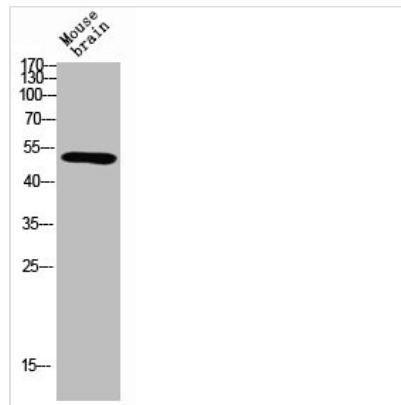
## Image



Western Blot analysis of 293 cells using SGK1 Polyclonal Antibody



Western Blot analysis of HuvEc cells using SGK1 Polyclonal Antibody



Western Blot analysis of mouse brain using SGK1 Polyclonal Antibody

**Usage**

For Research Use Only. Not for use in diagnostic or therapeutic procedures.