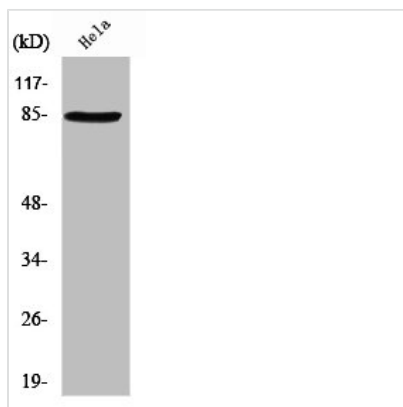




ANKK1 Antibody

Product Code	CSB-PA004077
Storage	Upon receipt, store at -20°C or -80°C. Avoid repeated freeze.
Uniprot No.	Q8NFD2
Immunogen	Synthesized peptide derived from the Internal region of Human SgK288.
Raised In	Rabbit
Species Reactivity	Human
Tested Applications	WB, ELISA; WB:1:500-1:2000, ELISA:1:20000
Form	Liquid
Conjugate	Non-conjugated
Storage Buffer	Liquid in PBS containing 50% glycerol, 0.5% BSA and 0.02% sodium azide.
Purification Method	The antibody was affinity-purified from rabbit antiserum by affinity-chromatography using epitope-specific immunogen.
Isotype	IgG
Alias	ANKK1; PKK2; SGK288; Ankyrin repeat and protein kinase domain-containing protein 1; Protein kinase PKK2; Sugen kinase 288; SgK288; X-kinase
Immunogen Species	Homo sapiens (Human)
Target Names	ANKK1

Image



Western Blot analysis of HeLa cells using SgK288 Polyclonal Antibody

Usage

For Research Use Only. Not for use in diagnostic or therapeutic procedures.