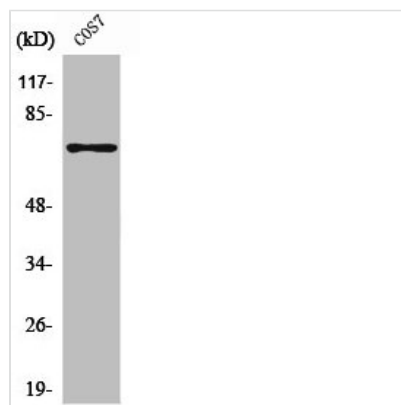




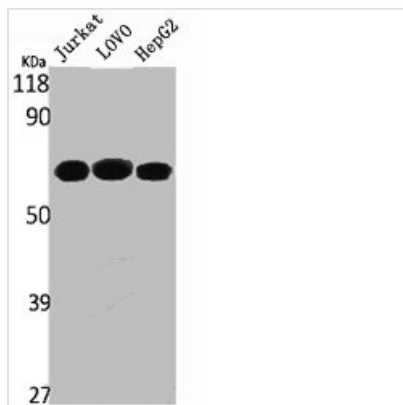
PTPN11 Antibody

| | |
|----------------------------|---|
| Product Code | CSB-PA004089 |
| Storage | Upon receipt, store at -20°C or -80°C. Avoid repeated freeze. |
| Uniprot No. | Q06124 |
| Immunogen | Synthesized peptide derived from the Internal region of Human SH-PTP2. |
| Raised In | Rabbit |
| Species Reactivity | Human,Mouse,Rat,Monkey |
| Tested Applications | WB, IHC, ELISA; WB:1:500-1:2000, IHC:1:100-1:300, ELISA:1:40000 |
| Form | Liquid |
| Conjugate | Non-conjugated |
| Storage Buffer | Liquid in PBS containing 50% glycerol, 0.5% BSA and 0.02% sodium azide. |
| Purification Method | The antibody was affinity-purified from rabbit antiserum by affinity-chromatography using epitope-specific immunogen. |
| Isotype | IgG |
| Alias | PTPN11; PTP2C; SHPTP2; Tyrosine-protein phosphatase non-receptor type 11; Protein-tyrosine phosphatase 1D; PTP-1D; Protein-tyrosine phosphatase 2C; PTP-2C; SH-PTP2; SHP-2; Shp2; SH-PTP3 |
| Immunogen Species | Homo sapiens (Human) |
| Target Names | PTPN11 |

Image



Western Blot analysis of COS7 cells using SH-PTP2 Polyclonal Antibody



Western Blot analysis of Jurkat LOVO HepG2 cells using SH-PTP2 Polyclonal Antibody

Usage

For Research Use Only. Not for use in diagnostic or therapeutic procedures.