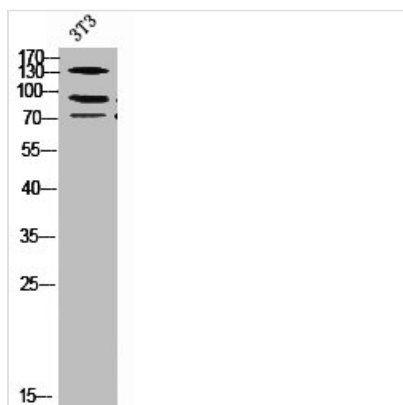




ZEB2 Antibody

Product Code	CSB-PA004093
Storage	Upon receipt, store at -20°C or -80°C. Avoid repeated freeze.
Uniprot No.	O60315
Immunogen	Synthesized peptide derived from the N-terminal region of Human SIP1.
Raised In	Rabbit
Species Reactivity	Human, Mouse, Rat
Tested Applications	WB, IHC, ELISA; WB:1:500-1:2000, IHC:1:100-1:300, ELISA:1:10000
Form	Liquid
Conjugate	Non-conjugated
Storage Buffer	Liquid in PBS containing 50% glycerol, 0.5% BSA and 0.02% sodium azide.
Purification Method	The antibody was affinity-purified from rabbit antiserum by affinity-chromatography using epitope-specific immunogen.
Isotype	IgG
Alias	ZEB2; KIAA0569; SIP1; ZFH1B; ZFX1B; HRIHFB2411; Zinc finger E-box-binding homeobox 2; Smad-interacting protein 1; SMADIP1; Zinc finger homeobox protein 1b
Immunogen Species	Homo sapiens (Human)
Target Names	ZEB2

Image



Western Blot analysis of NIH-3T3 cells using SIP1 Polyclonal Antibody

Usage For Research Use Only. Not for use in diagnostic or therapeutic procedures.