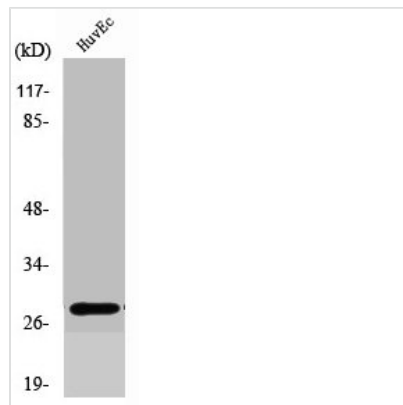




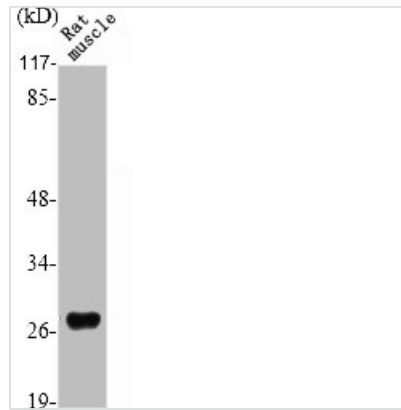
SIX6 Antibody

Product Code	CSB-PA004096
Storage	Upon receipt, store at -20°C or -80°C. Avoid repeated freeze.
Uniprot No.	O95475
Immunogen	Synthesized peptide derived from the Internal region of Human Six3/6.
Raised In	Rabbit
Species Reactivity	Human,Mouse,Rat
Tested Applications	WB, IF, ELISA; WB:1:500-1:2000, IF:1:200-1:1000, ELISA:1:20000
Form	Liquid
Conjugate	Non-conjugated
Storage Buffer	Liquid in PBS containing 50% glycerol, 0.5% BSA and 0.02% sodium azide.
Purification Method	The antibody was affinity-purified from rabbit antiserum by affinity-chromatography using epitope-specific immunogen.
Isotype	IgG
Alias	SIX6; OPTX2; SIX9; Homeobox protein SIX6; Homeodomain protein OPTX2; Optic homeobox 2; Sine oculis homeobox homolog 6
Immunogen Species	Homo sapiens (Human)
Target Names	SIX6

Image



Western Blot analysis of COLO205 cells using Six3/6 Polyclonal Antibody



Western Blot analysis of RAT-MUSCLE cells using Six3/6 Polyclonal Antibody

Usage

For Research Use Only. Not for use in diagnostic or therapeutic procedures.