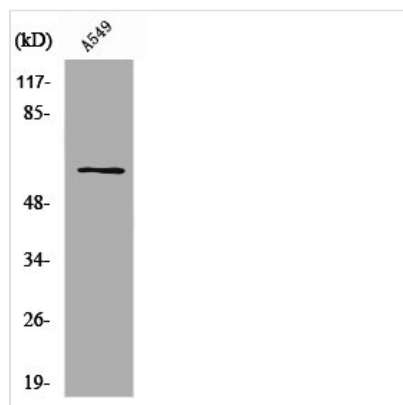




SLC43A1 Antibody

Product Code	CSB-PA004100
Storage	Upon receipt, store at -20°C or -80°C. Avoid repeated freeze.
Uniprot No.	O75387
Immunogen	Synthesized peptide derived from the Internal region of Human SLC43A1.
Raised In	Rabbit
Species Reactivity	Human
Tested Applications	WB, ELISA; WB:1:500-1:2000, ELISA:1:20000
Form	Liquid
Conjugate	Non-conjugated
Storage Buffer	Liquid in PBS containing 50% glycerol, 0.5% BSA and 0.02% sodium azide.
Purification Method	The antibody was affinity-purified from rabbit antiserum by affinity-chromatography using epitope-specific immunogen.
Isotype	IgG
Alias	SLC43A1; LAT3; PB39; POV1; Large neutral amino acids transporter small subunit 3; L-type amino acid transporter 3; Prostate cancer overexpressed gene 1 protein; Solute carrier family 43 member 1
Immunogen Species	Homo sapiens (Human)
Target Names	SLC43A1

Image



Western Blot analysis of Jurkat cells using SLC43A1 Polyclonal Antibody

Usage For Research Use Only. Not for use in diagnostic or therapeutic procedures.