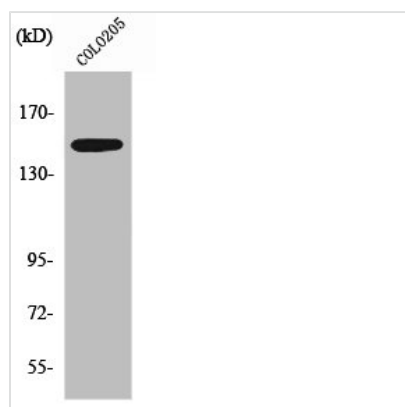




SLK Antibody

Product Code	CSB-PA004103
Storage	Upon receipt, store at -20°C or -80°C. Avoid repeated freeze.
Uniprot No.	Q9H2G2
Immunogen	Synthesized peptide derived from the C-terminal region of Human SLK.
Raised In	Rabbit
Species Reactivity	Human,Mouse,Rat
Tested Applications	WB, IHC, IF, ELISA; WB:1:500-1:2000, IHC:1:100-1:300, IF:1:200-1:1000, ELISA:1:5000
Form	Liquid
Conjugate	Non-conjugated
Storage Buffer	Liquid in PBS containing 50% glycerol, 0.5% BSA and 0.02% sodium azide.
Purification Method	The antibody was affinity-purified from rabbit antiserum by affinity-chromatography using epitope-specific immunogen.
Isotype	IgG
Alias	SLK; KIAA0204; STK2; STE20-like serine/threonine-protein kinase; STE20-like kinase; hSLK; CTCL tumor antigen se20-9; STE20-related serine/threonine-protein kinase; STE20-related kinase; Serine/threonine-protein kinase 2
Immunogen Species	Homo sapiens (Human)
Target Names	SLK

Image



Western Blot analysis of COLO205 cells using SLK Polyclonal Antibody