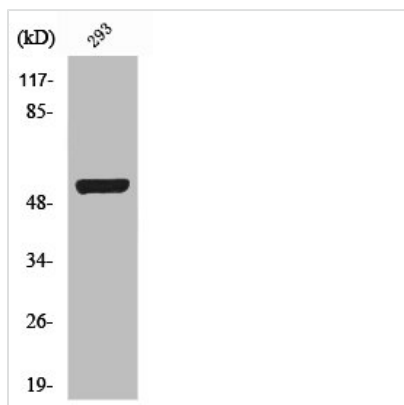




SMAD3 Antibody

Product Code	CSB-PA004115
Storage	Upon receipt, store at -20°C or -80°C. Avoid repeated freeze.
Uniprot No.	P84022
Immunogen	Synthesized peptide derived from Human Smad3 around the non-phosphorylation site of S425.
Raised In	Rabbit
Species Reactivity	Human,Mouse,Rat
Tested Applications	WB, IHC, ELISA; WB:1:500-1:2000, IHC:1:100-1:300, ELISA:1:20000
Form	Liquid
Conjugate	Non-conjugated
Storage Buffer	Liquid in PBS containing 50% glycerol, 0.5% BSA and 0.02% sodium azide.
Purification Method	The antibody was affinity-purified from rabbit antiserum by affinity-chromatography using epitope-specific immunogen.
Isotype	IgG
Alias	SMAD3; MADH3; Mothers against decapentaplegic homolog 3; MAD homolog 3; Mad3; Mothers against DPP homolog 3; hMAD-3; JV15-2; SMAD family member 3; SMAD 3; Smad3; hSMAD3
Immunogen Species	Homo sapiens (Human)
Target Names	SMAD3

Image



Western Blot analysis of 293 cells using Smad3 Polyclonal Antibody

Usage For Research Use Only. Not for use in diagnostic or therapeutic procedures.