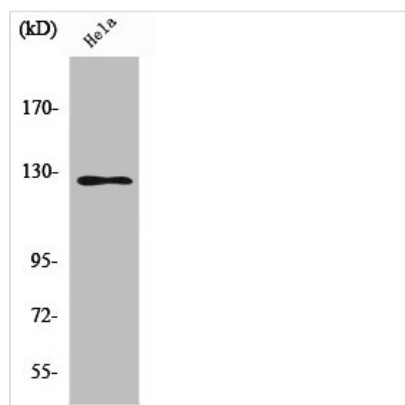




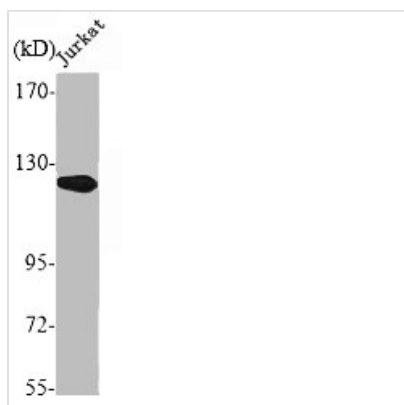
SMG7 Antibody

Product Code	CSB-PA004118
Storage	Upon receipt, store at -20°C or -80°C. Avoid repeated freeze.
Uniprot No.	Q92540
Immunogen	Synthesized peptide derived from the Internal region of Human SMG7.
Raised In	Rabbit
Species Reactivity	Human
Tested Applications	WB, IHC, IF, ELISA; WB:1:500-1:2000, IHC:1:100-1:300, IF:1:200-1:1000, ELISA:1:20000
Form	Liquid
Conjugate	Non-conjugated
Storage Buffer	Liquid in PBS containing 50% glycerol, 0.5% BSA and 0.02% sodium azide.
Purification Method	The antibody was affinity-purified from rabbit antiserum by affinity-chromatography using epitope-specific immunogen.
Isotype	IgG
Alias	SMG7; C1orf16; EST1C; KIAA0250; Protein SMG7; EST1-like protein C; SMG-7 homolog; hSMG-7
Immunogen Species	Homo sapiens (Human)
Target Names	SMG7

Image



Western Blot analysis of HuvEc cells using SMG7 Polyclonal Antibody



Western Blot analysis of Jurkat cells using
SMG7 Polyclonal Antibody