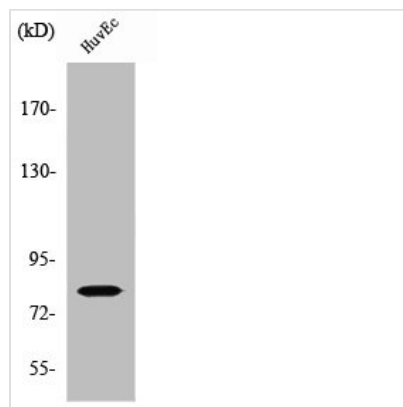




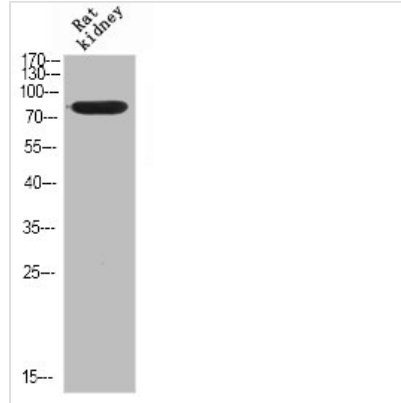
SLC5A3 Antibody

Product Code	CSB-PA004120
Storage	Upon receipt, store at -20°C or -80°C. Avoid repeated freeze.
Uniprot No.	P53794
Immunogen	Synthesized peptide derived from the Internal region of Human SMIT.
Raised In	Rabbit
Species Reactivity	Human,Mouse,Rat
Tested Applications	WB, ELISA; WB:1:500-1:2000, ELISA:1:10000
Form	Liquid
Conjugate	Non-conjugated
Storage Buffer	Liquid in PBS containing 50% glycerol, 0.5% BSA and 0.02% sodium azide.
Purification Method	The antibody was affinity-purified from rabbit antiserum by affinity-chromatography using epitope-specific immunogen.
Isotype	IgG
Alias	SLC5A3; Sodium/myo-inositol cotransporter; Na(+)/myo-inositol cotransporter; Sodium/myo-inositol transporter 1; SMIT1; Solute carrier family 5 member 3
Immunogen Species	Homo sapiens (Human)
Target Names	SLC5A3

Image



Western Blot analysis of HuvEc cells using SMIT Polyclonal Antibody



Western Blot analysis of RAT-KIDNEY cells using SMIT Polyclonal Antibody

Usage

For Research Use Only. Not for use in diagnostic or therapeutic procedures.