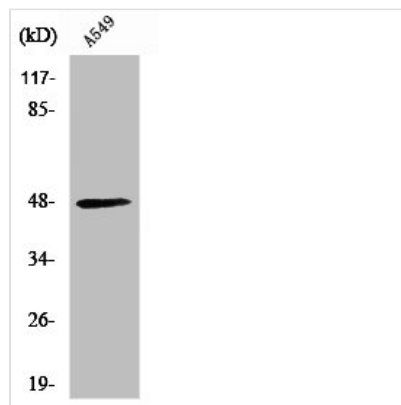




CKMT2 Antibody

Product Code	CSB-PA004121
Storage	Upon receipt, store at -20°C or -80°C. Avoid repeated freeze.
Uniprot No.	P17540
Immunogen	Synthesized peptide derived from the Internal region of Human sMtCK.
Raised In	Rabbit
Species Reactivity	Human,Mouse,Rat
Tested Applications	WB, IHC, IF, ELISA; WB:1:500-1:2000, IHC:1:100-1:300, IF:1:200-1:1000, ELISA:1:40000
Form	Liquid
Conjugate	Non-conjugated
Storage Buffer	Liquid in PBS containing 50% glycerol, 0.5% BSA and 0.02% sodium azide.
Purification Method	The antibody was affinity-purified from rabbit antiserum by affinity-chromatography using epitope-specific immunogen.
Isotype	IgG
Alias	CKMT2; Creatine kinase S-type; mitochondrial; Basic-type mitochondrial creatine kinase; Mib-CK; Sarcomeric mitochondrial creatine kinase; S-MtCK
Immunogen Species	Homo sapiens (Human)
Target Names	CKMT2

Image



Western Blot analysis of A549 cells using sMtCK Polyclonal Antibody

Usage For Research Use Only. Not for use in diagnostic or therapeutic procedures.