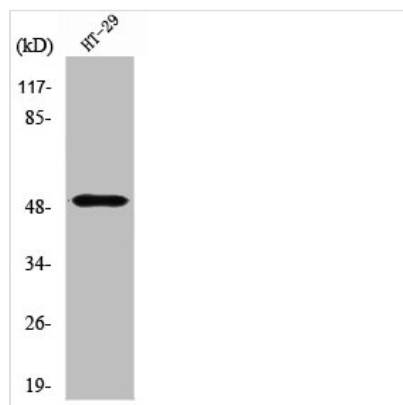




SMYD2 Antibody

Product Code	CSB-PA004122
Storage	Upon receipt, store at -20°C or -80°C. Avoid repeated freeze.
Uniprot No.	Q9NRG4
Immunogen	Synthesized peptide derived from the Internal region of Human SMYD2.
Raised In	Rabbit
Species Reactivity	Human,Mouse,Rat
Tested Applications	WB, ELISA; WB:1:500-1:2000, ELISA:1:10000
Form	Liquid
Conjugate	Non-conjugated
Storage Buffer	Liquid in PBS containing 50% glycerol, 0.5% BSA and 0.02% sodium azide.
Purification Method	The antibody was affinity-purified from rabbit antiserum by affinity-chromatography using epitope-specific immunogen.
Isotype	IgG
Alias	SMYD2; KMT3C; N-lysine methyltransferase SMYD2; HSKM-B; Histone methyltransferase SMYD2; Lysine N-methyltransferase 3C; SET and MYND domain-containing protein 2
Immunogen Species	Homo sapiens (Human)
Target Names	SMYD2

Image



Western Blot analysis of HT29 cells using SMYD2 Polyclonal Antibody

Usage For Research Use Only. Not for use in diagnostic or therapeutic procedures.