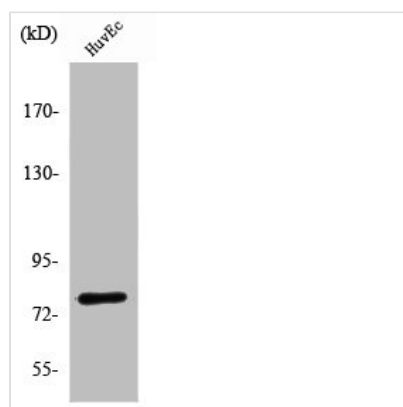




SKIL Antibody

Product Code	CSB-PA004125
Storage	Upon receipt, store at -20°C or -80°C. Avoid repeated freeze.
Uniprot No.	P12757
Immunogen	Synthesized peptide derived from the C-terminal region of Human SnoN.
Raised In	Rabbit
Species Reactivity	Human, Mouse
Tested Applications	WB, IHC, ELISA; WB:1:500-1:2000, IHC:1:100-1:300, ELISA:1:40000
Form	Liquid
Conjugate	Non-conjugated
Storage Buffer	Liquid in PBS containing 50% glycerol, 0.5% BSA and 0.02% sodium azide.
Purification Method	The antibody was affinity-purified from rabbit antiserum by affinity-chromatography using epitope-specific immunogen.
Isotype	IgG
Alias	SKIL; SNO; Ski-like protein; Ski-related oncogene; Ski-related protein
Immunogen Species	Homo sapiens (Human)
Target Names	SKIL

Image



Western Blot analysis of Jurkat cells using SnoN Polyclonal Antibody

Usage

For Research Use Only. Not for use in diagnostic or therapeutic procedures.