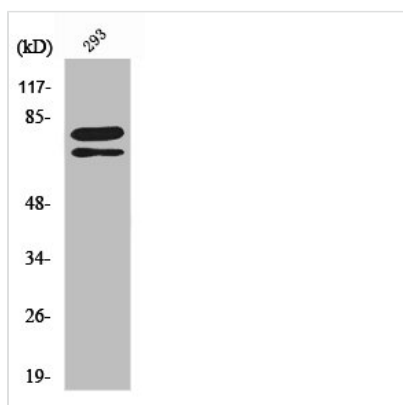




SF1 Antibody

Product Code	CSB-PA004139
Storage	Upon receipt, store at -20°C or -80°C. Avoid repeated freeze.
Uniprot No.	Q15637
Immunogen	Synthesized peptide derived from Human Splicing factor 1 around the non-phosphorylation site of S82.
Raised In	Rabbit
Species Reactivity	Human, Mouse
Tested Applications	WB, IHC, IF, ELISA; WB:1:500-1:2000, IHC:1:100-1:300, IF:1:200-1:1000, ELISA:1:20000
Form	Liquid
Conjugate	Non-conjugated
Storage Buffer	Liquid in PBS containing 50% glycerol, 0.5% BSA and 0.02% sodium azide.
Purification Method	The antibody was affinity-purified from rabbit antiserum by affinity-chromatography using epitope-specific immunogen.
Isotype	IgG
Alias	SF1; ZFM1; ZNF162; Splicing factor 1; Mammalian branch point-binding protein; BBP; mBBP; Transcription factor ZFM1; Zinc finger gene in MEN1 locus; Zinc finger protein 162
Immunogen Species	Homo sapiens (Human)
Target Names	SF1

Image



Western Blot analysis of 293 cells using Splicing factor 1 Polyclonal Antibody

Usage

For Research Use Only. Not for use in diagnostic or therapeutic procedures.