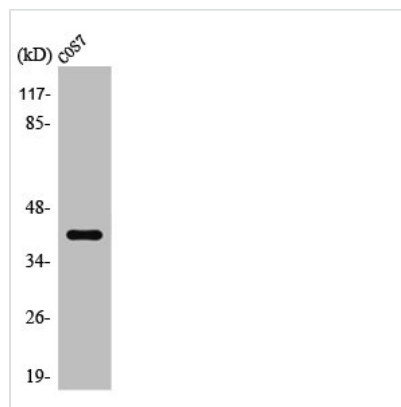




HTR1F Antibody

Product Code	CSB-PA004147
Storage	Upon receipt, store at -20°C or -80°C. Avoid repeated freeze.
Uniprot No.	P30939
Immunogen	Synthesized peptide derived from the Internal region of Human SR-1F.
Raised In	Rabbit
Species Reactivity	Human,Mouse,Rat,Monkey
Tested Applications	WB, IF, ELISA; WB:1:500-1:2000, IF:1:200-1:1000, ELISA:1:40000
Form	Liquid
Conjugate	Non-conjugated
Storage Buffer	Liquid in PBS containing 50% glycerol, 0.5% BSA and 0.02% sodium azide.
Purification Method	The antibody was affinity-purified from rabbit antiserum by affinity-chromatography using epitope-specific immunogen.
Isotype	IgG
Alias	HTR1F; HTR1EL; 5-hydroxytryptamine receptor 1F; 5-HT-1F; 5-HT1F; Serotonin receptor 1F
Immunogen Species	Homo sapiens (Human)
Target Names	HTR1F

Image



Western Blot analysis of COS7 cells using SR-1F Polyclonal Antibody

Usage

For Research Use Only. Not for use in diagnostic or therapeutic procedures.