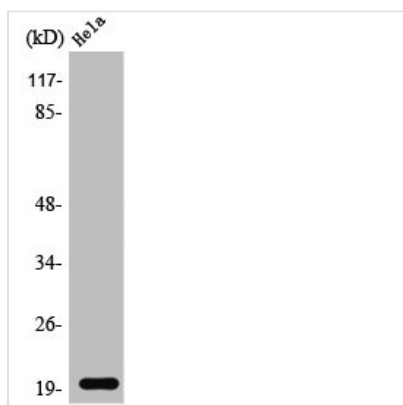




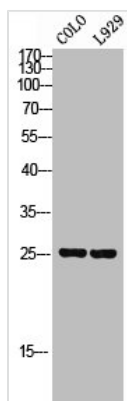
SRSF3 Antibody

Product Code	CSB-PA004159
Storage	Upon receipt, store at -20°C or -80°C. Avoid repeated freeze.
Uniprot No.	P84103
Immunogen	Synthesized peptide derived from the C-terminal region of Human SRp20.
Raised In	Rabbit
Species Reactivity	Human, Mouse
Tested Applications	WB, IHC, IF, ELISA; WB:1:500-1:2000, IHC:1:100-1:300, IF:1:200-1:1000, ELISA:1:5000
Form	Liquid
Conjugate	Non-conjugated
Storage Buffer	Liquid in PBS containing 50% glycerol, 0.5% BSA and 0.02% sodium azide.
Purification Method	The antibody was affinity-purified from rabbit antiserum by affinity-chromatography using epitope-specific immunogen.
Isotype	IgG
Alias	SRSF3; SFRS3; SRP20; Serine/arginine-rich splicing factor 3; Pre-mRNA-splicing factor SRP20; Splicing factor; arginine/serine-rich 3
Immunogen Species	Homo sapiens (Human)
Target Names	SRSF3

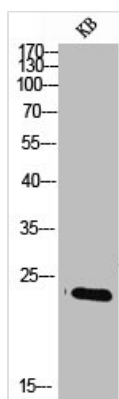
Image



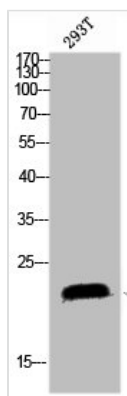
Western Blot analysis of Jurkat cells using SRp20 Polyclonal Antibody



Western Blot analysis of COLO L929 cells using SRp20 Polyclonal Antibody



Western blot analysis of KB lysis using SRp20 antibody.



Western blot analysis of 293T lysis using SRp20 antibody.