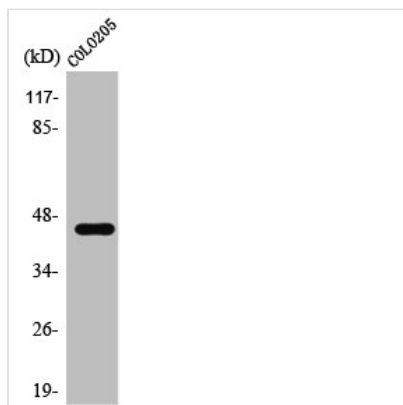




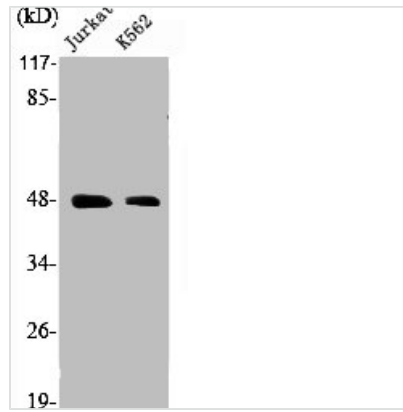
SSB Antibody

Product Code	CSB-PA004161
Storage	Upon receipt, store at -20°C or -80°C. Avoid repeated freeze.
Uniprot No.	P05455
Immunogen	Synthesized peptide derived from Human SSB around the non-phosphorylation site of S366.
Raised In	Rabbit
Species Reactivity	Human
Tested Applications	WB, IHC, ELISA; WB:1:500-1:2000, IHC:1:100-1:300, ELISA:1:40000
Form	Liquid
Conjugate	Non-conjugated
Storage Buffer	Liquid in PBS containing 50% glycerol, 0.5% BSA and 0.02% sodium azide.
Purification Method	The antibody was affinity-purified from rabbit antiserum by affinity-chromatography using epitope-specific immunogen.
Isotype	IgG
Alias	SSB; Lupus La protein; La autoantigen; La ribonucleoprotein; Sjogren syndrome type B antigen; SS-B
Immunogen Species	Homo sapiens (Human)
Target Names	SSB

Image



Western Blot analysis of COLO205 cells using SSB Polyclonal Antibody



Western Blot analysis of Jurkat K562 cells using SSB Polyclonal Antibody

Usage

For Research Use Only. Not for use in diagnostic or therapeutic procedures.