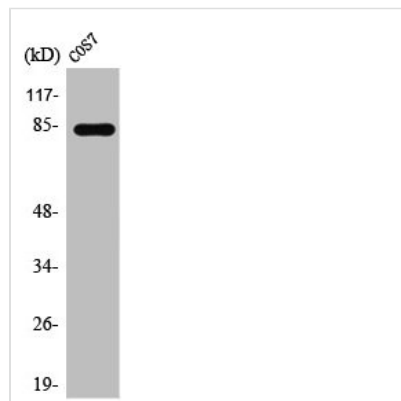




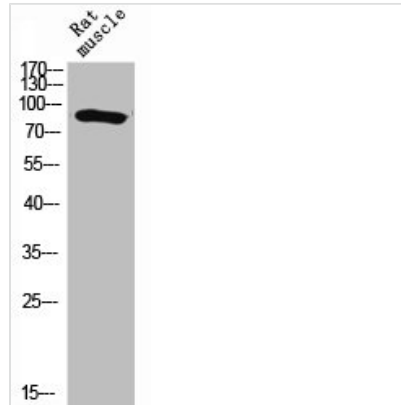
STAT1 Antibody

Product Code	CSB-PA004168
Storage	Upon receipt, store at -20°C or -80°C. Avoid repeated freeze.
Uniprot No.	P42224
Immunogen	Synthesized peptide derived from Human Stat1 around the non-phosphorylation site of Y701.
Raised In	Rabbit
Species Reactivity	Human,Mouse,Rat,Monkey
Tested Applications	WB, IHC, IP, ELISA; WB:1:500-1:2000, IHC:1:100-1:300, IP:2-5ug, ELISA:1:10000
Form	Liquid
Conjugate	Non-conjugated
Storage Buffer	Preservative: 0.03% Proclin 300;Constituents: 50% Glycerol, 0.01M PBS, PH 7.4
Purification Method	The antibody was affinity-purified from rabbit antiserum by affinity-chromatography using epitope-specific immunogen.
Isotype	IgG
Alias	STAT1; Signal transducer and activator of transcription 1-alpha/beta; Transcription factor ISGF-3 components p91/p84
Immunogen Species	Homo sapiens (Human)
Target Names	STAT1

Image



Western Blot analysis of COS7 cells using Stat1 Polyclonal Antibody



Western Blot analysis of RAT-MUSCLE cells using Stat1 Polyclonal Antibody