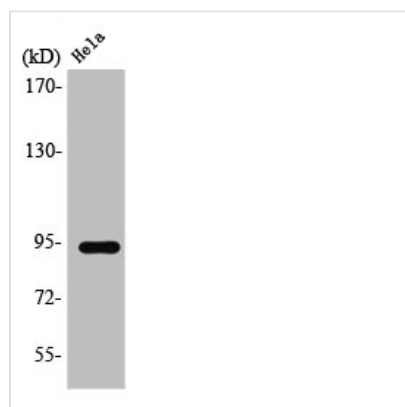




STAT6 Antibody

Product Code	CSB-PA004183
Storage	Upon receipt, store at -20°C or -80°C. Avoid repeated freeze.
Uniprot No.	P42226
Immunogen	Synthesized peptide derived from Human Stat6 around the non-phosphorylation site of T645.
Raised In	Rabbit
Species Reactivity	Human,Mouse,Rat
Tested Applications	WB, IHC, IP, ELISA; WB:1:500-1:2000, IHC:1:100-1:300, IP:2-5ug, ELISA:1:20000
Form	Liquid
Conjugate	Non-conjugated
Storage Buffer	Liquid in PBS containing 50% glycerol, 0.5% BSA and 0.02% sodium azide.
Purification Method	The antibody was affinity-purified from rabbit antiserum by affinity-chromatography using epitope-specific immunogen.
Isotype	IgG
Alias	STAT6; Signal transducer and activator of transcription 6; IL-4 Stat
Immunogen Species	Homo sapiens (Human)
Target Names	STAT6

Image



Western Blot analysis of HeLa cells using Stat6 Polyclonal Antibody