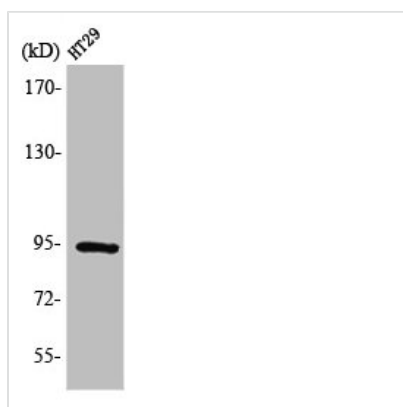




ELP2 Antibody

Product Code	CSB-PA004186
Storage	Upon receipt, store at -20°C or -80°C. Avoid repeated freeze.
Uniprot No.	Q6IA86
Immunogen	Synthesized peptide derived from the C-terminal region of Human StIp1.
Raised In	Rabbit
Species Reactivity	Human
Tested Applications	WB, ELISA; WB:1:500-1:2000, ELISA:1:10000
Form	Liquid
Conjugate	Non-conjugated
Storage Buffer	Liquid in PBS containing 50% glycerol, 0.5% BSA and 0.02% sodium azide.
Purification Method	The antibody was affinity-purified from rabbit antiserum by affinity-chromatography using epitope-specific immunogen.
Isotype	IgG
Alias	ELP2; STATIP1; Elongator complex protein 2; ELP2; SHINC-2; STAT3-interacting protein 1; StIP1
Immunogen Species	Homo sapiens (Human)
Target Names	ELP2

Image



Western Blot analysis of HT29 cells using StIp1 Polyclonal Antibody

Usage

For Research Use Only. Not for use in diagnostic or therapeutic procedures.