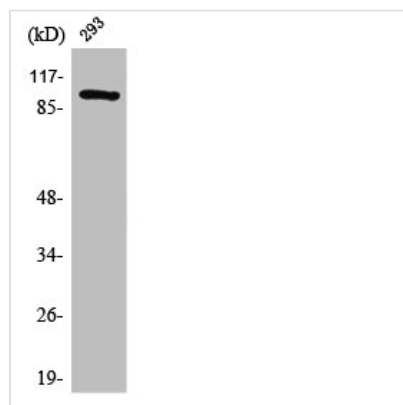




SFSWAP Antibody

Product Code	CSB-PA004197
Storage	Upon receipt, store at -20°C or -80°C. Avoid repeated freeze.
Uniprot No.	Q12872
Immunogen	Synthesized peptide derived from the Internal region of Human SWAP.
Raised In	Rabbit
Species Reactivity	Human
Tested Applications	WB, ELISA; WB:1:500-1:2000, ELISA:1:20000
Form	Liquid
Conjugate	Non-conjugated
Storage Buffer	Liquid in PBS containing 50% glycerol, 0.5% BSA and 0.02% sodium azide.
Purification Method	The antibody was affinity-purified from rabbit antiserum by affinity-chromatography using epitope-specific immunogen.
Isotype	IgG
Alias	SFSWAP; SFRS8; SWAP; Splicing factor; suppressor of white-apricot homolog; Splicing factor, arginine/serine-rich 8; Suppressor of white apricot protein homolog
Immunogen Species	Homo sapiens (Human)
Target Names	SFSWAP

Image



Western Blot analysis of 293 cells using SWAP Polyclonal Antibody

Usage For Research Use Only. Not for use in diagnostic or therapeutic procedures.